



**10. Snipe Creek**

Acres: 3  
 Habitat Type: Upland  
 Access Coordinates:  
 -93.049174, 41.834777



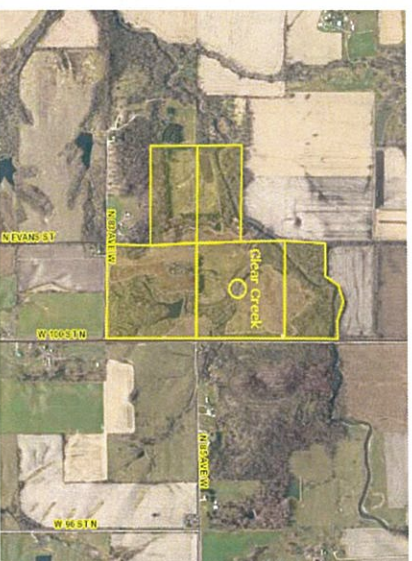
**11. North Skunk**

Acres: 6  
 Habitat Type: Forest  
 Access with permission.



**12. South Skunk/Beyers Bridge**

Acres: 139  
 Habitat Type: Forest  
 Access Coordinates:  
 -92.973348, 41.537158



**13. Clear Creek**

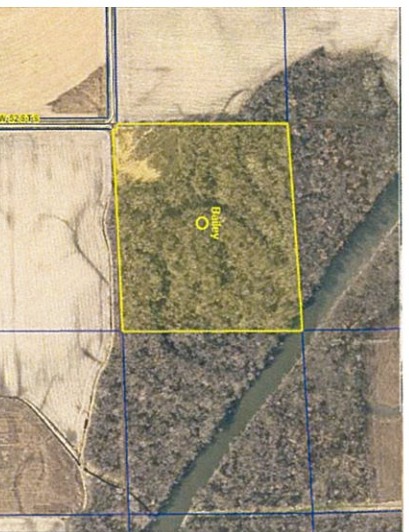
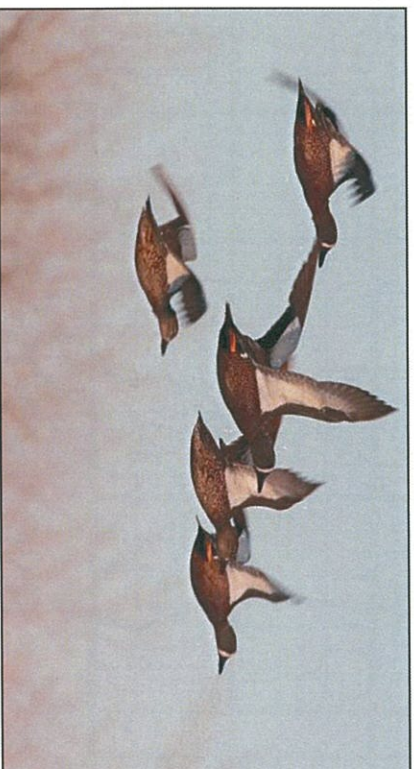
Acres: 143  
 Habitat Type: Upland  
 Access Coordinates:  
 -93.231977, 41.812670

Jasper County Conservation Contact Info

Park Officers:  
 Jerry Ratliff...(641) 521-2697  
 Dennis Cooling...(641) 521-7393

Jasper County Conservation Office:  
 Phone: (641) 792-9780  
 Email: conservation@co.jasper.ia.us  
 Website: www.jaspercountyconservation.com  
 Office Location: 1030 W 2nd St. S Newton, Iowa  
 50208

**JASPER COUNTY PUBLIC HUNTING AREAS**



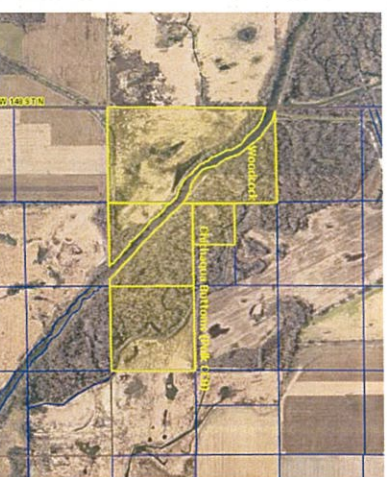
**1. Bailey**

Acres: 46  
 Habitat Type: Forest  
 Access Coordinates:  
 -93.116353, 41.630070



**2. Hartley Heritage Fen**

Acres: 33  
 Habitat Type: Upland Wetland  
 Non-Toxic Shot Required: Yes  
 Access Coordinates:  
 -93.342996, 41.760841



**3. Woodcock/Chichaqua Bottoms**

Acres : 749  
 Habitat Type : Prairie Upland & Timber  
 Non-Toxic Shot Required : Yes  
 Access with permission.